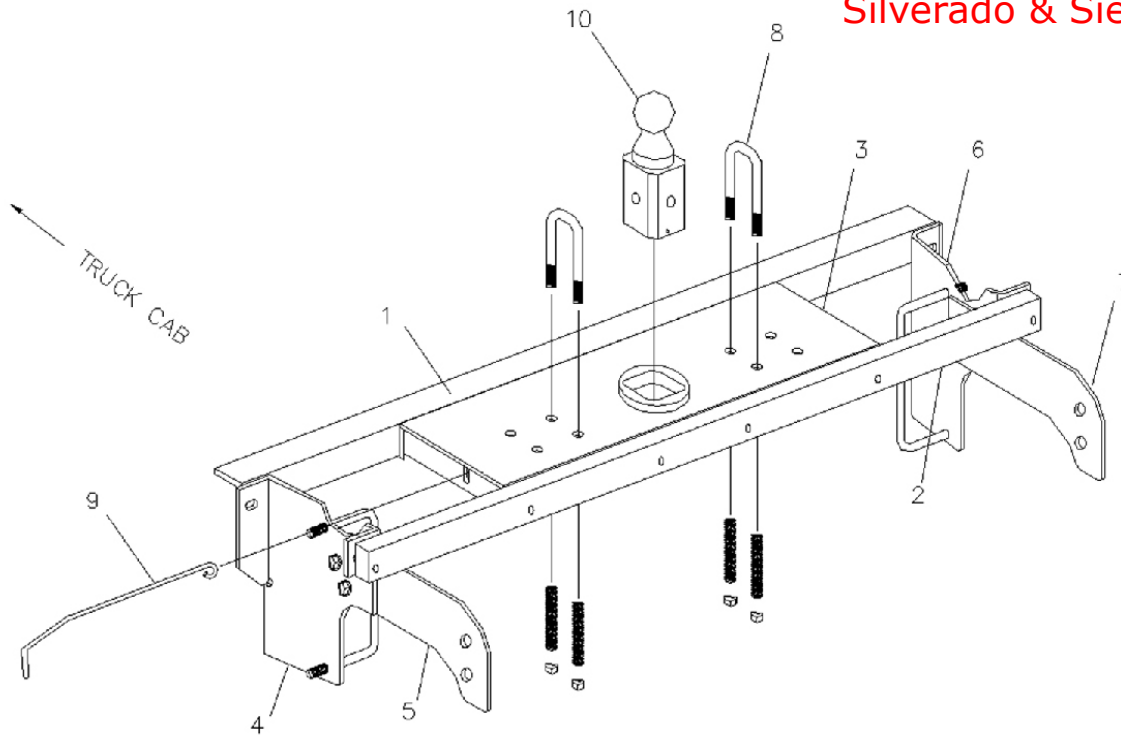




Turnoverball™ Gooseneck Hitch Installation Instructions

Model 1061RN

Chevy-GMC (2001 and newer)
3/4 Ton 2500 HD (Heavy Duty) Series
Long and Short Bed
Silverado & Sierra Series



Parts List

- 1) Front Crossmember
- 2) Rear Crossmember
- 3) Center Section
- 4) Left Front Sideplate
- 5) Left Rear Sideplate
- 6) Right Front Sideplate
- 7) Right Rear Sideplate
- 8) Safety Chain Brackets
- 9) Latch Pin Handle
- 10) 2-5/16" Ball

Mounting Kit

- 11— 1/2" x 1 1/2" bolts
- 2 — 3/4" x 2 1/2" bolts
- 2 - Side Plate Bushings
- 2 - 4 1/4" x 8 3/4" U-bolts
- 6 - 1/2" x 1" Carriage Bolts
- 17— 1/2" flat washers
- 2— 3/4" flat washers
- 21— 1/2" lock washers
- 2— 3/4" lock washers
- 15— 1/2" nuts
- 2— 3/4" nuts

Safety Chain Kit

- 2 — 1/2" U-bolts
- 4 — 1/2" lock nuts
- 4 — Springs

Call or Email us for Installation Support

B&W Custom Truck Beds, Inc.

1216 HWY 224 / PO Box 186

Humboldt, KS 66748

(800) 248-6564

(620) 473-3664

Fax: (620) 473-3766

hitches@turnoverball.com

www.turnoverball.com

BEFORE INSTALLING

OVERHEAD LIFTING DEVICE

An overhead-lifting device, such as chain falls, engine hoist, or cable come-a-long, can be used to lift the center section of the hitch in place. Lower a loop of rope or chain through the 4" hole in the truck bed floor and attach it to the latch pin in the round hitch receiver tube in the center section. Use the lifting device to raise the center section until the round hitch receiver tube that protrudes from the center section fits in the 4" hole in the truck bed floor. Maintaining upward pressure may facilitate fastening the crossmember to the center section, especially if the truck bed floor has been distorted downward from heavy use. If you use an overhead-lifting device, it should be disconnected before squaring the center section across the frame, installing the sideplates and torquing fasteners.

WARNING

Most trucks have FUEL LINES and/or BRAKE LINES and/or ELECTRICAL WIRES located along the frame rails where B&W Turnoverball™ hitches install. Carefully examine the location of fuel lines, brake lines and electrical wires BEFORE INSTALLATION. Be certain you will not damage fuel lines, brake lines or electrical wires when positioning hitch components, drilling holes and tightening fasteners. The fuel tank vent, located on top of the gas tank, can be easily damaged during the installation of the hitch components. Care must be taken when positioning the front crossmember and center section components.

INSTALLATION INSTRUCTIONS

STEP ONE - REMOVE SPARE TIRE AND HEAT SHIELD

The heat shield under the bed floor must either be removed or a section cut out for the hitch assembly to be installed.

A) Remove the heat shield from in front of the back crossmember.

B) Remove the heat shield from the back of the crossmember located near the front of the wheel well.



STEP TWO - REMOVE EXHAUST BRACKET

To ease installation of the center section, remove the lower exhaust bracket. Simply pull the hanger rod out of the rubber bracket hole and a 6" to 8" wood block can then be positioned between the exhaust pipe and frame of the truck. This will increase your clearance between the top of the exhaust pipe and the bottom of the truck bed floor. (**Caution:** Exhaust pipe may be hot).



STEP THREE- MARKING AND CUTTING 4 INCH HOLE IN TRUCK BED FLOOR

Begin by verifying and measuring the correct hole location in the truck bed floor. Measure from the back end (tailgate end) of the truck bed floor by hooking a tape measure over the back of the truck box and mark the floor at the correct measurement. Next, center the location between the wheel wells. This will be the center point for the four inch hole. This location is critical to the correct installation of this hitch, so measure, mark and saw carefully. If the truck has a plastic bed liner, you may drill through both, but it is more difficult to accurately locate the midpoint between the fender wheel wells, and to be sure that the bed liner does not move while sawing the hole. Make a 4 inch hole at this location using a four inch hole saw, or by marking a 4 inch circle and cutting it out with a saber saw equipped with a metal cutting blade.



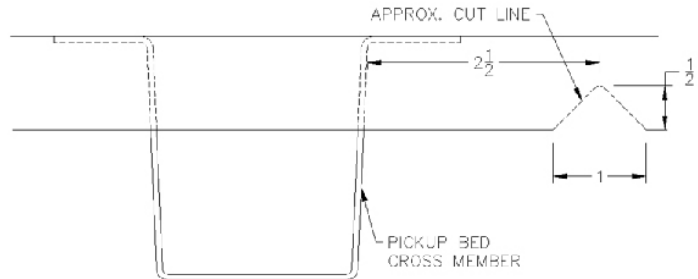
Truck Type	Ball Location	Axle Location
Long Bed	49.5 inches	5"
Short Bed	44.25 inches	4"

TIP: B&W uses a 3/4" piece of plywood as a drilling guide to prevent the hole saw from moving while drilling the 4" hole in the truck bed.

STEP FOUR - CROSS MEMBER INSTALLATION

Install the two cross members. They will be installed by sliding them from inside the wheel well, above the tire, through the gap between the bed and the truck's frame and across until they span the frame rails. The gap between the bed and frame is large enough to allow this, but the gap is partially obstructed by a sheet metal flange (about 1" in height) that is hanging down from the bottom of the truck bed floor. (See diagram and photos). A small notch needs to be made in this flange on the passenger side of the truck. Locate the center truck bed cross member. Measure over 2 1/2" from the front of the cross member and make a mark. This will be the center point of the notch that is needed. Mark a 1" wide by 1/2" tall notch. Remove the metal of the marked area with sheet metal sheers. This will allow the front angle iron crossmember

BED FLOOR FLANGE IN PASSENGER'S SIDE WHEEL WELL



STEP FIVE - CROSS MEMBER INSTALLATION

Place the 48" front cross member (1) between the truck frame and bed floor using the notch made in step four. Be sure the holes in the cross member are facing to the rear of the truck. Slide the cross member across both frame rails and then forward to the front edge of the 4" hole in the bed.



Next install the 46 1/2" rear cross member bar (2) between the truck frame and cross member a quarter turn so the threaded holes are offset to the bottom of the bar and slide back until there is enough room for the center section to be placed between the two cross mem-

bed floor. Rotate the rear

STEP SIX - CENTER SECTION INSTALLATION

Raise the center section (3) into position between the crossmembers and carefully move it above the fuel tank from beneath the truck. The receiver socket must be positioned to the rear with the latch pin release arm on the driver's side. A lifting device, as described on Page 2 will help. The round hitch receiver that protrudes from the top of the center section must fit through the hole in the truck bed floor. Insert three 1/2" x 1 1/2" bolts in the front cross-member and through the front legs of the center section. Place flat washer, lock washer and nut on bolts and then hand tighten. Insert four 1/2" x 1 1/2" bolts, with flat and lock washer installed, through the rear leg of the center section into the threaded holes of the rear crossmember and hand tighten.



STEP SEVEN - INSTALL SIDEPLATES

Next install the sideplates. The driver's sideplate is shown, with the bent flange to the front, and the large holes to the rear. Attach the two pieces of the sideplate together with 1/2" carriage bolts. The carriage bolts should be inserted into the square holes from the backside of the sideplates and fastened using a flat washer, lock washer and nut on each bolt. This can be completed before installation on the frame rail. Do not tighten at this time.



Attach the flange on the sideplate to the front cross member using a 1/2 x 1 1/2 inch bolt, flat washer, lock washer and nut. Insert the bolt through the flange so that the nut when tightened is on the front side of the cross member. Next attach the rear bar to the sideplate ear threading a 1/2 inch by 1 1/2 inch bolt with flat and lock washer into the bar.

STEP EIGHT

Install the 1/2-inch x 8 1/4-inch U-bolt from inside the frame through the holes in the sideplate above and below the frame, use a lock washer and nut on each end of the U-bolt. Repeat this procedure on the passenger side of the truck with the other sideplate. (While installing the U-bolts around the frame use caution not to damage or pinch the wiring harness or brake lines).



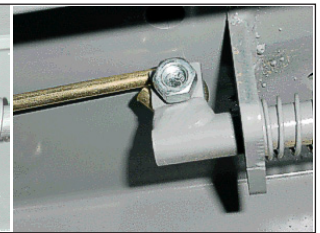
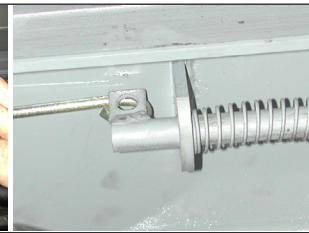
Install the 3/4-inch by 2 1/2-inch bolt.

Place a flat washer and frame insert on the 3/4" bolt and install the bolt from inside the frame through the lower rear hole in the side plate. Fasten with a lock washer and nut. (The hole in the frame is a slotted hole, and B&W provides an insert that converts the slotted hole to a 3/4" round hole). When completed, tighten all the hardware in this order: Tighten the center section bolts to the cross members and then make certain the hitch is square with the frame. Tighten the 3/4-inch sideplate bolts, and then tighten the frame clamping U-bolts. Tighten the U-bolts slowly, alternating between the top and bottom legs of the U-bolt until equally tightened to a maximum of 40 ft. lbs. This torque may not be obtained without bending the side plate some. This is normal and will not hinder the function of the hitch. Next, tighten the three carriage bolts on each side plate and then tighten the side plates to the front and rear cross members.



STEP NINE - INSTALL LATCH PIN RELEASE HANDLE

Install the latch pin release handle (9) by inserting the handgrip end of the handle rod from inside the center section through the hole in the endplate. Align the handle loop and the hole in the tab on the end of the latch pin assembly, putting the handle loop on the right side of the tab and bolt together using the 3/8" x 3/4" bolt and lock nut. When properly attached, the center of the handle should be in line with the center of the pin assembly, and the bolt head should be on the loop side, and the nut on the tab side.

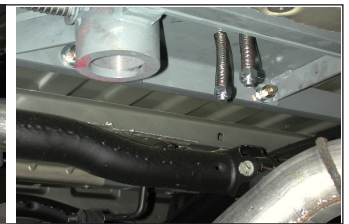


Tighten the bolt.

STEP TEN - INSTALL SAFETY CHAIN BRACKETS

To install the safety chain brackets (8) it is necessary to drill four 1/2" holes through the truck bed floor. Drill the holes from beneath the truck, through the two holes located on each side **and closest to the round receiver tube in the center section**. This will locate the safety chain brackets (8) in the lowest point of the floor corrugation. Drop a U-bolt through each pair of holes from the topside of the truck bed floor. Place a spring and lock nut on each of the four legs. Tighten the lock nuts until 1/4" of thread extends through the lock nut.

Note: 2004 CHEVY/GMC 2500 - A new fuel valve mounted on the rear of the fuel tank will not allow proper clearance for the standard safety chain U-bolt. Please use the shorter U-bolt included in the safety chain kit on the driver's side to allow for proper clearance and use of the safety chain U-bolt.



STEP ELEVEN-REPLACE EXHAUST BRACKET

Reinstall the exhaust hanger brackets and the spare tire if removed during step 2.



STEP TWELVE - ENGAGE LATCH PIN

Retract the latch pin by pulling the handle all the way out until it stops and then rotating it clockwise. Place the 2-5/16" Ball (10) in the hitch receiver. Engage the latch pin by rotating the handle counter clockwise. Be certain the latch pin passes through the holes in the 2-5/16" Ball and fully engages through the hitch receiver. Finally, remove and lightly grease the four corners on the square base of the 2-5/16" Ball.